



INTEL® NUC 8 BUSINESS MINI PC

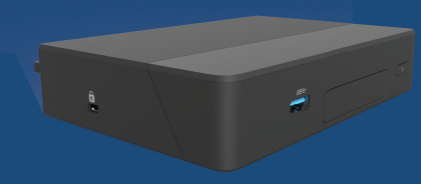


INTEL® NUC 7 BUSINESS MINI PC



Model	NUC8i7HNKQC	NUC7i3DNKTC	NUC7i3DNHNC
Processor	8th Gen Intel® Core™ i7-8705G Processor	7th Gen Intel® Core™ i3-7100U Processor	
Processor Frequency	3.1 GHz - 4.1 GHz Turbo	2.4 GHz	
Graphics	Radeon™ RX Vega M GL	Intel® HD Graphics 620	
Display Output, Max Displays	2xHDMI 2.0b, 2 Mini DP 1.2, 5x4k, 6x 1080p	2xHDMI 2.0a, 2x4K	
Memory	2x8 GB DDR4-2400 1.2V SO-DIMM	1x4 GB DDR4-2133 1.2V SO-DIMM	
Operating System	Windows® 10 Professional	Windows® 10 Professional	
Storage	512 GB NVMe SSD	128 GB SATA 3 SSD	1 TB HDD
Features (Shared between Mini PCs & Kits/Boards)	2 Thunderbolt™ 3 ports, 6 USB ports, 1 USB-C port, Intel® Dual Band Wireless-AC 8265, Bluetooth v4.2, Dual Intel® Gigabit LAN ports	4 USB ports, Intel® Wireless-AC i219-LM LAN, 8265, Bluetooth v4.2, Intel® Ubuntu* 16.0.4 LTS, delayed AC Start	
Target Usages	Home Office/Content Creation/Media Editing	Digital Signage/SMB/Conference Room Collaboration	

INTEL® NUC 8 RUGGED KIT & BOARD#



INTEL® NUC 7 KIT & BOARD



Model	NUC8CCHKR/NUC8CCHB	NUC7i3DNKE/NUC7i3DNHE/NUC7i3DNBE
Processor	Intel® Celeron® Processor N3350	7th Gen Intel® Core™ i3-7100U Processor
Processor Frequency	1.1 GHz – 2.4 GHz Burst	2.4 GHz
Graphics	Intel® HD Graphics 500	Intel® HD Graphics 620
Display Output, Max Displays	1xHDMI 2.0a, 1x HDMI 1.4	Dual HDMI 2.0a, 4-lane eDP 1.4
Memory	4 GB	Up to 32 GB Memory Support, DDR4-2133 1.2V SO-DIMM
Operating System		
Storage	64 GB eMMC	M.2 22x80 Storage only/ M.2 22x80 or SATA 2.5" Storage/Board only
Features (Shared between Mini PCs & Kits/Boards)	4 USB Ports, Intel® Wireless-AC 3168, Intel® i211-AT 10/100/1000 LAN, DC Cable Strain Relief, Fanless Chassis	4 USB ports, Intel® Wireless-AC 8265, Bluetooth, Intel® i219-LM 10/100/1000 Mbps Ethernet LAN
Target Usages	Industrial/Digital Signage/Edge Data Analytics	Digital Signage/Embedded Design/Kiosk

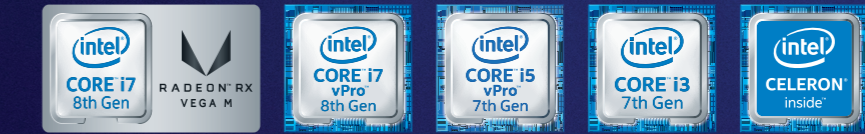
#The Intel® NUC 8 Rugged Kit/Board will only be available in Q4 2019.



INTEL® NUC

BUILT FOR BUSINESS, POWERED FOR SUCCESS

Perfect for digital signage, industrial, or enterprise solutions, the Intel® NUC Mini PC brings full business PC capability to small spaces, offering remote manageability, faster meeting starts, and more to help provide more value to your business customers.



INTEL® NUC COMMERCIAL USAGES

PROFESSIONALS

Get mind-blowing performance for the modern workplace. Intel® NUC Mini PCs are designed for Windows® 10 Pro with the power for all of your office apps.



CONFERENCE ROOM

Transform existing conference rooms and collaboration areas into smart, connected meeting spaces. Pair with the Intel Unite® Solution for seamless collaboration wherever your business takes you.



DIGITAL SIGNAGE

Create interactive touch systems with brilliant 4K Ultra HD visuals. The Intel® NUC supports remote manageability, encryption, multiple displays, and broad third-party ecosystem support.



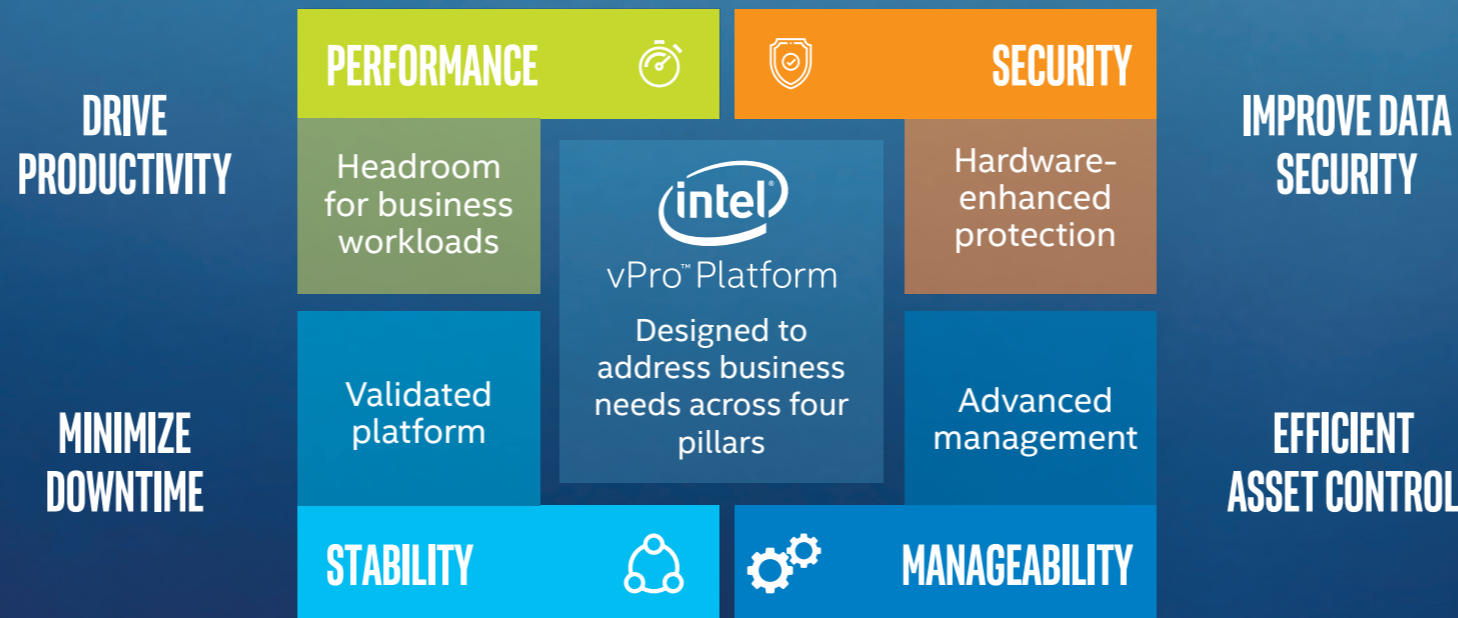
READY FOR IOT

Customize your solution to meet your needs. Intel® NUC kits and boards are configurable, scalable, and are a natural fit for tight spaces or embedded applications.



BUILT FOR BUSINESS

Intel® vPro™ Helps Businesses to Succeed



INTEL® NUC7 BUSINESS MINI PC



INTEL® NUC7 KIT & BOARD



Model	NUC7i5DNKPC	NUC7i7DNKE/ NUC7i7DNHE/ NUC7i7DNBE	NUC7i5DNKE/ NUC7i5DNHE/ NUC7i5DNBE
Processor	7th Gen Intel® Core™ i5-7300U Processor	8th Gen Intel® Core™ i7-8650U Processor	7th Gen Intel® Core™ i5-7300U Processor
Processor Frequency	2.6 GHz - 3.5 GHz Turbo	1.9 GHz - 4.2 GHz Turbo	2.6 GHz - 3.5 GHz Turbo
Graphics	Intel® HD Graphics 620	Intel® UHD Graphics 620	Intel® HD Graphics 620
Display Output, Max Displays	2xHDMI 2.0a, 2x4K	2xHDMI 2.0b, 4-lane eDP 1.4	Dual HDMI 2.0a, 4-lane eDP 1.4
Memory	2x4GB DDR4-2133 1.2V SO-DIMM	Up to 32 GB Memory Support, DDR4-2400 1.2V SO-DIMM	Up to 32 GB Memory Support, DDR4-2133 1.2V SO-DIMM
Operating System	Windows® 10 Professional		
Storage	256 GB NVMe SSD	M.2 22x80 SSD Storage Only/ M.2 22x80 SSD or SATA 2.5" Storage/ Board only	
Features (Shared between Mini PCs & Kits/ Board)	Intel® vPro™ Technology, Intel Unite® Solution, TPM 2.0, 4 USB ports, Intel® Wireless-AC 8265, Intel® i219-LM 10/100/1000 LAN, Display emulation, Certified with Ubuntu* 16.04 LTS, Qualified for 24x7 operation, delayed AC Start		
Target Usages	Digital Signage/SMB/ Conference Room Collaboration/vPro™ Enterprise PC		Digital Signage/Embedded Design/Kiosk

THE INTEL UNITE® SOLUTION

Turning meeting room challenges into high-quality collaboration experiences.



Intel Unite® solution requires an Intel® Core™ vPro™ processor-powered PC hub - supported by NUC7i5DNKPC, NUC7i5DNKE/HE/BE, NUC7i7DNKE/HE/BE